



# THANK YOU FOR JOINING US TODAY!



Please take a moment to sign the Welcome Book, located in your pew. Members, please greet any guests seated near you.

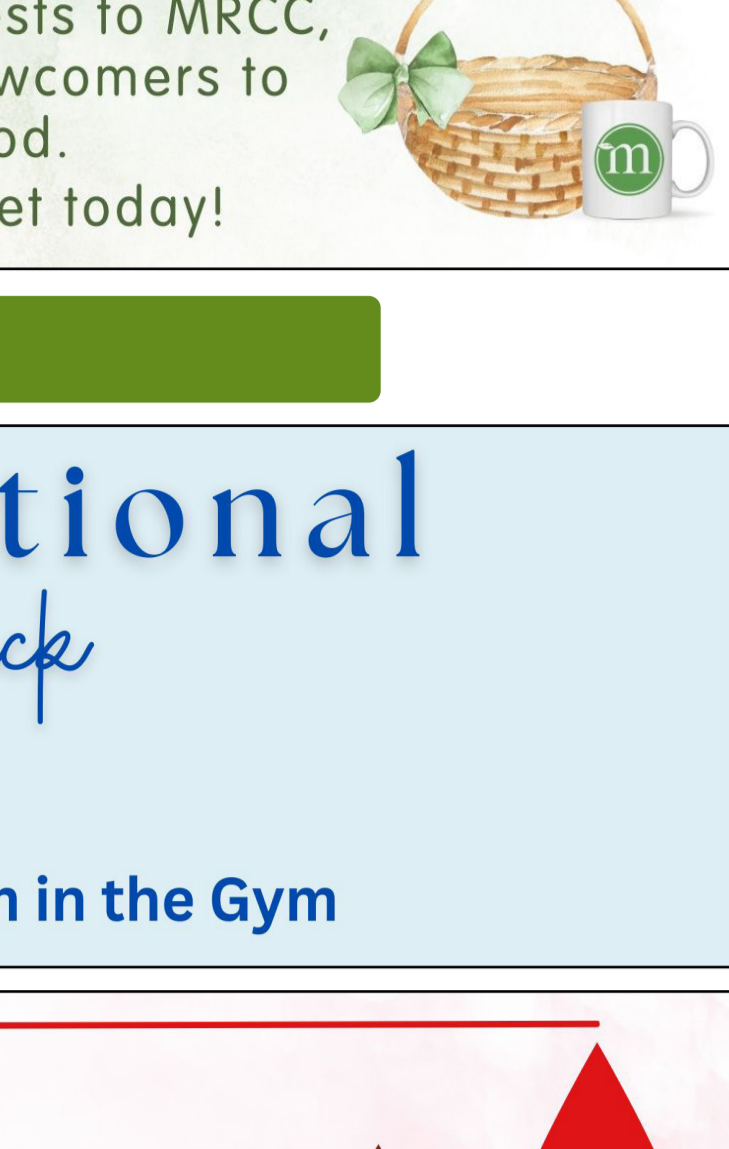
If you're joining us virtually, sign our digital book at [mrcc.org/welcomebook](http://mrcc.org/welcomebook)

## Please Join Us For First Cup

First Cup is an opportunity for newcomers to learn more about MRCC

Every Sunday at 9:35 a.m. in the Welcome Center

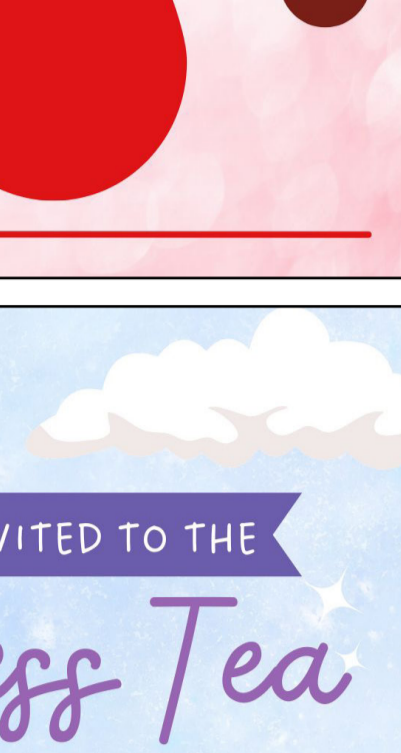
Visit [mrcc.org/firstcup](http://mrcc.org/firstcup) for more details



## WELCOME MUGS AND BASKETS

These simple gifts are available at Information Central. Mugs are intended for first-time guests to MRCC, while baskets are for newcomers to your neighborhood.

Deliver a mug or basket today!



### FEATURED ITEMS

## International Worship & Potluck

**TODAY**  
Worship 11 am  
Potluck Lunch 12 pm in the Gym

## BLOOD DRIVE WEDNESDAY

**SAVE A LIFE, DONATE BLOOD**

MOBILE UNIT  
4-6 PM  
FEBRUARY 5

## YOU ARE INVITED TO THE Princess Tea

Girls ages 3-5 with their royal escort

FEB 11 | 6:30-8:30 PM

Fellowship Central  
[MRCC.ORG/PRINCESSTEAM](http://MRCC.ORG/PRINCESSTEAM)

### MINISTRY UPDATES

## Senior ADULT MINISTRY

### Lunch & Learn

**FEBRUARY 20**  
**HERALD OF TRUTH**  
**CHASE TURNER**

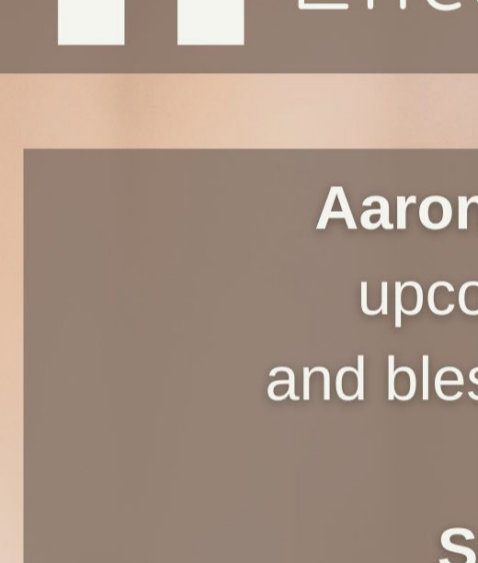
Chase will bring us an up-to-date report on some exciting news and new opportunities available through this long-time and well-respected ministry.

Email [tom.conklin@mrcc.org](mailto:tom.conklin@mrcc.org) if you plan to attend

## women's ministry

### WOMEN'S RETREAT

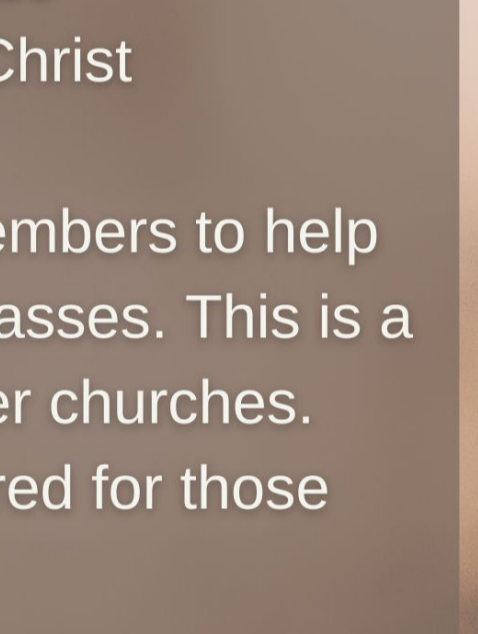
**Heart of Grace** is Feb. 7-9 at Canyon Camp & Conference Center. Two nights or one night in lodge rooms or cabins, plus Sat. "day only" options are available. Register at a [mrcc.org/women](http://mrcc.org/women) or at the table in the lobby by **TODAY**.



### SWAG VALENTINE TEA

All single women are invited to the SWAG (Single Women's Activities Group) 2025 kickoff on **Sat., Feb. 15**, 11 am - 1 pm, in S1 in the Summit.

Reservations are \$5 and may be made at [mrcc.org/women](http://mrcc.org/women) or Ministry Central by **Feb. 9**.



### WOMEN'S BRUNCH

Save **Sat., March 1**, 10 am to 12 pm, for our annual women's brunch. Details coming next week.



### THREADS OF COMPASSION

work day is **TODAY, Feb. 2**, 2:30-4 pm in A120 to knit and crochet scarves for survivors of sexual violence. Details are at [threadsokc.org](http://threadsokc.org).



## Smaller Church Encouragement Events

Aaron Sechrest is leading an upcoming endeavor to visit and bless smaller congregations.

**Sunday, February 9**  
Okeene Church of Christ  
MRCC van transportation available

**Sunday, February 16**  
Capitol Hill Church of Christ

We would love to send 10-15 members to help run service and help with Bible classes. This is a great way to partner with sister churches. A delicious lunch will be prepared for those who come!

To sign up or ask questions, contact Aaron at [aaron.sechrest@alumni.oc.edu](mailto:aaron.sechrest@alumni.oc.edu).

## CELEBRATE RECOVERY

### MEETS EVERY FRIDAY

**6 PM - DINNER**  
1ST TIME GUESTS EAT FREE!!!

**7 PM - LARGE GROUP**  
A TIME OF WORSHIP FOLLOWED BY PERSONAL TESTIMONY OR RECOVERY LESSON

**8 PM - OPEN SHARE GROUPS**  
GENDER AND ISSUE SPECIFIC SMALL GROUPS

**9 PM - COMMON GROUNDS**  
FELLOWSHIP, COFFEE & DESSERT

PARTICIPANTS RECEIVE **FREE CHILDCARE 6:45-9:15**

[MRCC.ORG/CR](http://MRCC.ORG/CR)  
[celebratercovery@mrcc.org](http://celebratercovery@mrcc.org)

### SERMON INFO

## OUR MISSION

On Sunday morning, Phil will continue our sermon series on the mission statement with a message focused on Good Works. Phil will look at the episode late in John the Baptist's life and how Jesus explained his identity through the good works he was doing in the world.

## DON'T THROW AWAY THE KEYS

On Sunday evening, Phil will continue our series on faith out of Hebrews with a message called *Keeping the Keys Requires Effort*. Phil will explore the context of Hebrews 4 and reflect on what went wrong with Israel in the wilderness.

### OTHER NOTES

## HEARING ASSISTANCE AVAILABLE

Assistive listening devices are available for use in the auditorium at every worship service. Request a receiver at the AV booth.

### STAY CONNECTED & INFORMED

Watch live or previous broadcasts of worship, sermons, or WOW at [YouTube.com/memorialroad](http://YouTube.com/memorialroad).

Download the MRCC App (for iOS and Android) for easy access to all our resources. Check it out today!

### FAMILY UPDATES

02-02-25

#### HOSPITALIZED

**Isaac Newberry** is in St. Anthony's, room 11714, following surgery.  
**Beth Walker** is at the OK Heart Hospital in room 235. She had surgery Jan. 29. No visitors at this time.

#### PRAYER REQUEST

Visit [mrcc.org/prayerlist](http://mrcc.org/prayerlist) for an extended list of those to keep in your prayers

#### SYMPATHY

*Our sympathy is extended to...*  
**Teri Stovall** on the passing of her father, Joe Park, on Jan. 24. His services were Feb. 1.

#### BIRTHS

*Congratulations to...*  
**Dennis & Dena Lovett** and **Jim & Norma Freeman** on the birth of their grandson and great-grandson, Lucas Dean, on Jan. 16. Parents are Jaclyn & Adam Burroughs.

#### SHOWER

A wedding shower for **Kennedy Wood** and **Jackson George**, son of **Kelly & Kelly K. George**, will be Feb. 9, 2-4 pm at **Judy Branch's** home. They are registered at Crate & Barrel, Pottery Barn, and BC Clark.

## Washed Anew

**We Celebrate The Following Baptism:**  
**Katie Burkhead**, who was baptized Sun., Jan 26.

Welcome to the Family

#### Ways to give

#### Prayer Requests

[mrcc.org](http://mrcc.org)  
[mrcc.app](http://mrcc.app)  
text amount to:  
884.311.2333

We would love to pray for you. Submit your prayer requests at [mrcc.org/prayer](http://mrcc.org/prayer), or on the MRCC App.

Weekly Budget: \$114,880 | Avg Weekly Offering: \$111,837 YTD Budget Deficit: \$12,172